



INSTALLATION GUIDE

BBT/ BBC/ BBCD/ BBA/ BBT065-NL

TO SUIT TOYOTA HILUX 2018+ Facelift
2WD Hi Rider and 4x4 Models including Workmate 4x4 D/C
(Not suitable for Workmate SR 4x2 Single/Extra Dual Cab Narrow Body)



- Ironman 4x4 BBT/ BBC/ BBCD/ BBA/ BBT065-NL Bull Bars to suit Toyota Hilux 2018+ Facelift 2WD Hi Rider and 4x4 Models.
- It will take about 3 hours to install.

DATE OF ISSUE: 050219

NOTE: This product has been tested for air bag compatibility and therefore the mounting system MUST NOT be modified

IMPORTANT: Bull Bar installations should only be done by a qualified person and it's the responsibility of this person to ensure correct fitment.

1. Before installation check bull bar application is compatible with your vehicle.

2. Remove grill, front bumper bar, bumper reinforcement and lower bumper support brackets.

Re-attach front guards to headlights.



3. Fit inner and outer chassis support brackets with supplied hardware.

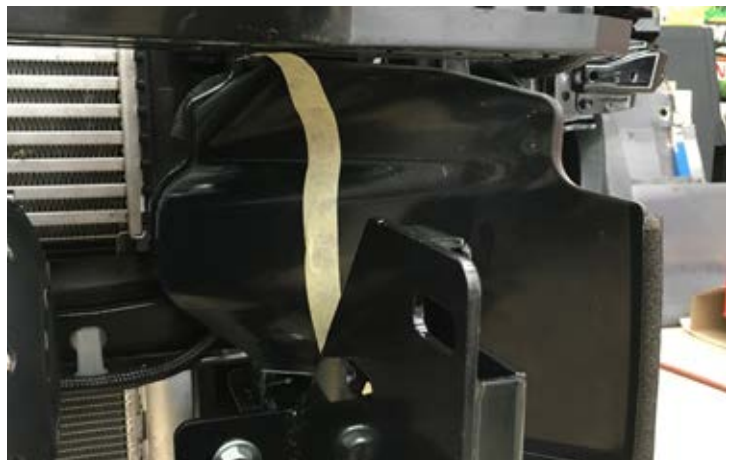
NOTE: If fitting recovery points do so now.



4. Install chassis bracket to vehicle using hardware provided as shown.



5. Cut plastic air-deflectors along lines as shown to allow fitment of bull bar to bracket.



6. Unwrap bull bar. Check over riders and light assemblies are tight in bull bar before installation.

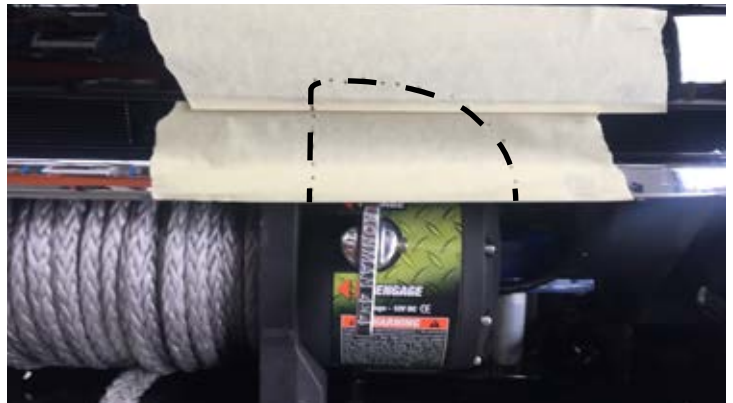
7. Unclip grill from bumper.



- 8.** Refit grill using supplied bracket to secure centre section as shown.



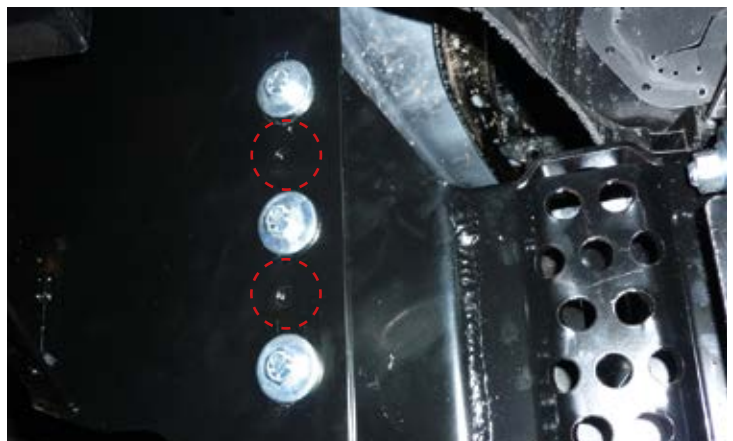
NOTE: If fitting a winch - cut away section of grill as indicated.



- 9.** Fit bull bar to chassis brackets using M12 bolts, flat washers, spring washers and nuts provided. Align with mudguard leaving a 10-15mm gap as shown.



- 10.** Once bull bar is aligned with vehicle and tightened, drill through pinning holes (circled in red) between bull bar and chassis bracket and secure with bolts, washers and nuts provided.

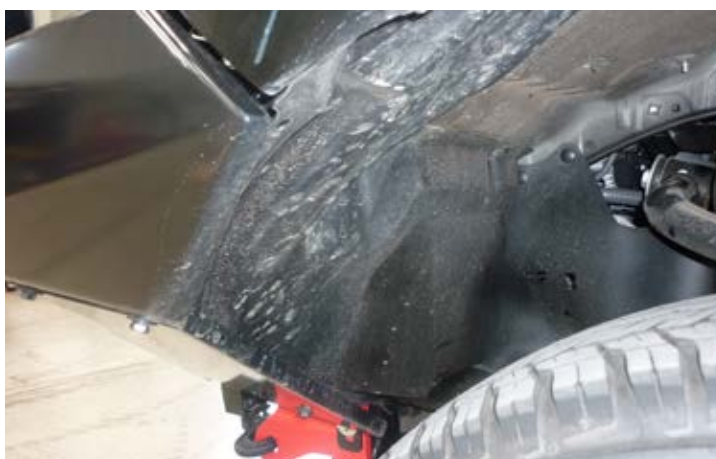


11. Connect park lights, indicators and fog lights as per wiring diagrams on page 8 of Instruction Guide.

12. Fit protection plates underneath the bull bar using M8 bolts, spring washers and flat washers provided.



13. Trim guard liners as shown and attach to protection plate using cable ties.



Winch Installation

1. Fit winch to bracket and bolt fairlead to recess in front of bull bar using bolts, washers and nuts provided.



2. Fit bull bar to vehicle referring to steps of bull bar fitting instructions.

3. Mount control box in desired location.



4. Connect three colour coded cables to the corresponding poles on winch motor.



5. Connect the thin black earth wire and negative battery cable to the earth connection on the opposite side of winch motor.



6. Run the positive and negative battery cables into the engine bay taking care to secure cables away from any sharp or moving objects.

7. Connect positive and negative battery cables main battery of vehicle (Not Auxilliary Battery).

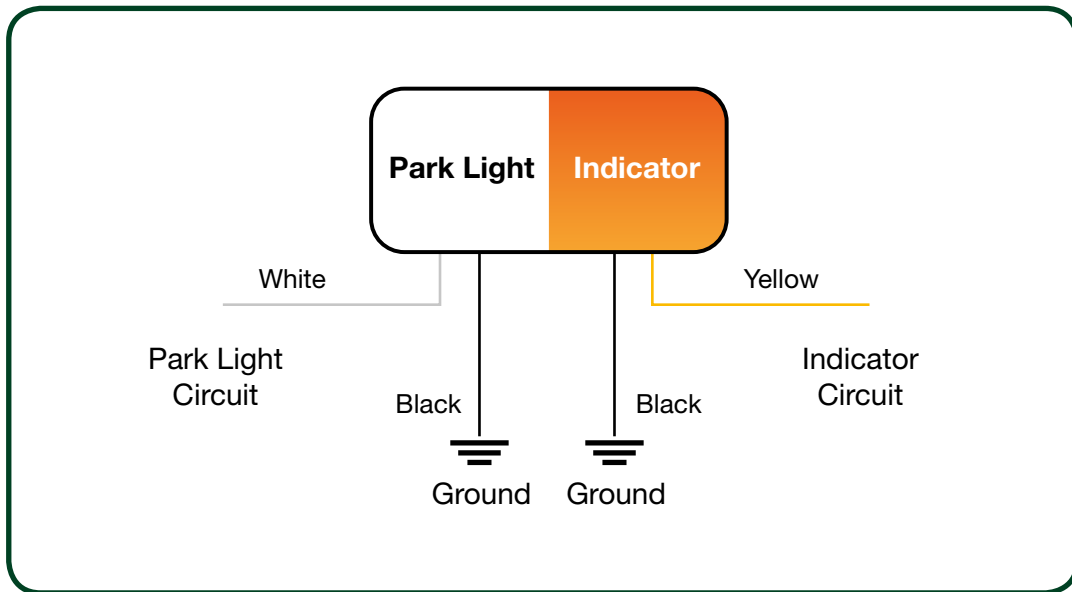
8. Attach breather hose to barb fitting on winch motor. Run hose to the highest available point in engine bay and cable tie in position. Cable tie hose away from any sharp, hot or moving objects.

Refer back to step 18 of the Bull Bar fitting instructions on page 7



Wiring Diagrams

PARK LIGHT & INDICATOR



FOG LIGHTS

