



INSTALLATION GUIDE

**IMPORTANT: MUST BE USED IN CONJUNCTION
WITH AN IRONMAN 4X4 BULL BAR**

IRP051

TO SUIT TOYOTA HILUX AND FORTUNER 2015+



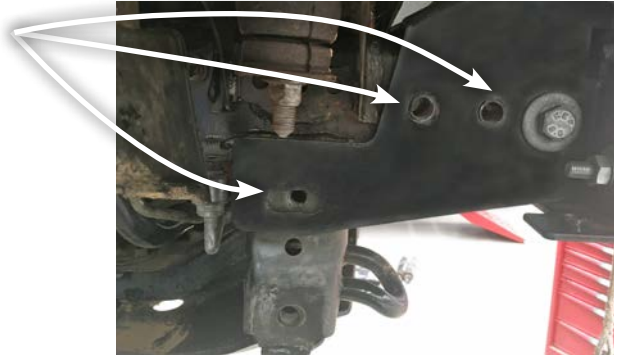
- Ironman 4x4 Recovery Points fit to the chassis
- It will take about 45 mins to install, or 10 mins if installed with fitment of bull bar
- Below is a list of required tools for installing your Ironman 4x4 Recovery Points:
 - **13, 17, and 19mm socket**
 - **19mm spanner**

IMPORTANT: Recovery Point installations should only be done by a qualified person and it is the responsibility of this person to ensure correct fitment.

1. Before installation check recovery points are compatible with your vehicle.

2. If fitting to a vehicle with an Ironman 4x4 bull bar already installed, remove the 3 x under trays.

3. One side at a time, remove the 3 bolts from the support bracket.



4. Place recovery point into position, and replace the 2 x bolts that pass through the chassis and leave loose.



5. Install the 1 x 10.9 bolt and washers provided with the recovery points.



6. Mount bracket with provided 10.9 bolt and washer. Tighten all bolts.

