



# INSTALLATION GUIDE

## IRP070

TO SUIT SUZUKI GJ JIMNY  
(2018+)

APPROXIMATE FITTING TIME: 45 MINS

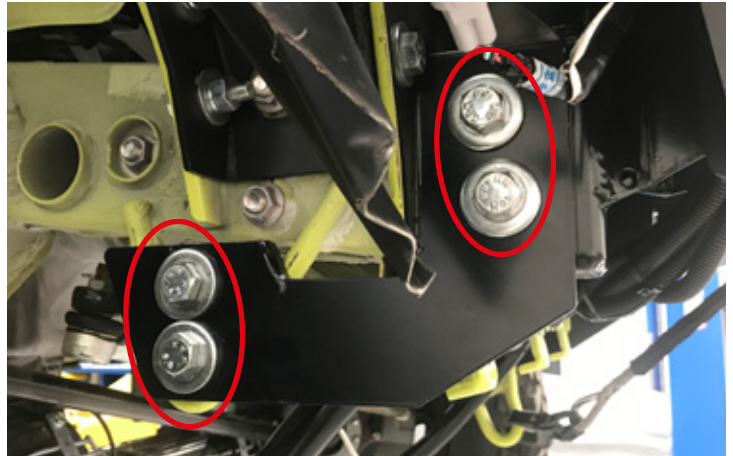


- Ironman 4x4 Recovery Points fit to the chassis
- It will take about 45 mins to install, or 10 mins if installed with fitment of bull bar
- Below is a list of required tools for installing your Ironman 4x4 Recovery Points:
  - 13, 17 and 19mm socket
  - 19mm spanner
  - Torque wrench

**\* Only compatible with Ironman 4x4 bull bars**

**IMPORTANT:** Recovery Point installations should only be done by a qualified person and it is the responsibility of this person to ensure correct fitment.

1. Before installation check recovery point application is compatible with your vehicle.
2. If fitting to a vehicle with an Ironman 4x4 bull bar already installed, remove the 3 undertrays.
3. One side at a time, remove the 4 bolts from the support bracket



4. Place recovery point into position, and attach to the chassis using 2 x 100mm M12 bolts, washers and nuts. Use 2 x 60mm M12 bolt in the rear holes.

Repeat the process for the opposite side of the vehicle.



5. Tighten all bolts and re-fit the undertrays.

