



# INSTALLATION INSTRUCTIONS

## NISSAN NAVARA NP300 CANOPY

CANFIBRE048



***NOTE: Although Ironman 4x4 take every possible measure to prevent water and dust from entering the cargo area, we cannot be held accountable for holes and gaps in your factory tub***

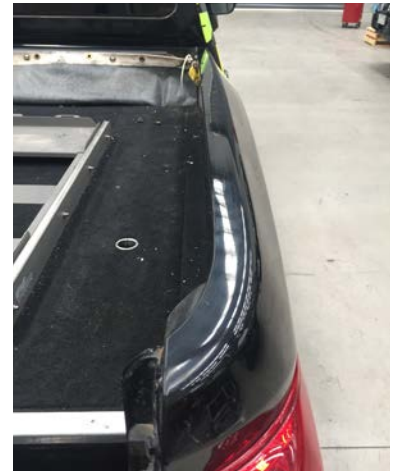
1. Make sure your canopy part number is compatible with your vehicle.

2. Once canopy is removed from its packaging, clean outside of the front window and also the outside of the vehicle's rear window.



3. If applicable to your vehicle, remove sports bars, ladder rack, hard lid and associated mounting bracketry or tonneau cover and associated mounting bracketry.

4. Clean top edge of of tub using wax and grease remover.



5. Using supplied neutral cure silicone seal any seams or holes that might allow water to enter the tub once canopy is installed.





6. Attach adhesive seal to the top of tub and seal all joints with neutral cure silicone.



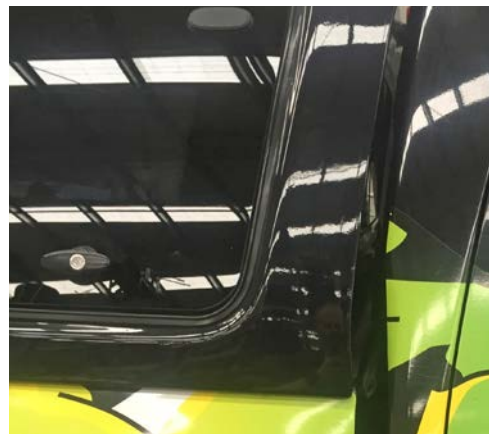
7. Place canopy in position on the tub of the vehicle, being careful not to dislodge the seal.



8. Close the vehicle tailgate and adjust the position of the canopy until the rear door closes easily and makes even contact with the tailgate.



9. Recheck that the canopy is square and aligned evenly with the vehicle tub. Adjust if required.



10. Place three mounting brackets, evenly spaced in position down each side of the canopy mounting rail and tighten firmly.



11. Recheck canopy alignment and rear door for ease of opening and closing and adjust if required.

12. Using supplied self drilling screws supplied, secure each clamp to tub.

NOTE: Check underneath top lip of vehicle tub before drilling to make sure that the screw is not too long.



13. Fit supplied black covers.



14. Connect brake light and central locking as follows:

Brake light: Passenger side rear wheel arch  
factory sports bar loom  
Red - Red  
Black - Black

Central  
Locking: Run loom into drivers side kick panel

**2015-2/2018**

Locate white 14 pin plug  
Brown factory wire - blue canopy wire  
Yellow factory wire - Green canopy wire

**3/2018+**

Light blue factory wire - blue canopy wire  
Pink factory wire - green canopy wire

Note: Check operation of brake light and central locking prior to re-fitting kick panel and trims.

**2015-2/2018**



**3/2018+**



**TIPS AND HINTS:**

- Whilst driving, to reduce water and dust being sucked into the vehicle cargo area through gaps around the factory tailgate opening or drainholes etc., the front window on your canopy can be opened slightly to pressurise the vehicle tub.
- When washing your vehicle, water might enter the vehicle cargo area if high pressure is directed around tailgate opening or pointed directly at window and door rubbers.