



# INSTALLATION GUIDE

## **BBT050/ BBC050 BBCD050 /BBA050/ BBT050-NL**

MITSUBISHI MQ TRITON 2015+



- Ironman 4x4 BBT/ BBC/ BBCD/ BBA050/ BBT050-NL Bull Bars fit to a Mitsubishi MQ Triton+
- It will take about 4 hours to install.

**NOTE:** This product has been tested for air bag compatibility and therefore the mounting system **MUST NOT** be modified

**IMPORTANT:** Bull Bar installations should only be done by a qualified person and it is the responsibility of this person to ensure correct fitment.

**PLEASE NOTE:**

The item shown in the photo is not required on Australian models



1. Before installation check bull bar application is compatible with your vehicle.
2. Disconnect any bumper lights. Remove factory bumper bar, grill assembly and factory protection plate from under radiator. Remove washer bottle and neck.

3. Temporarily mount bull bar cradle to front cross member using 4 captive nuts. Ensure bracket is centralised.



4. Mark 8 holes to be drilled through cross member and remove bull bar cradle.



5. Drill holes using a 21mm hole saw, only through outer skin of chassis cross member.



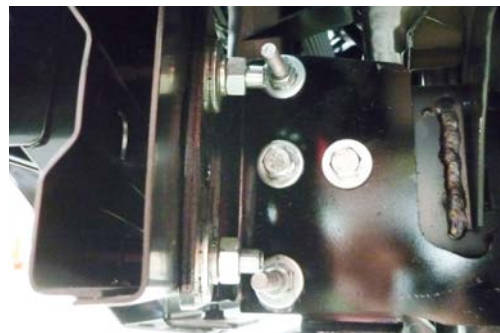
Drill a pilot hole using the centre drill bit of the hole saw through the inner skin as shown.



6. Open the inner holes to 12mm



7. Mount chassis support brackets to inner and outer faces of chassis using hardware provided. Do not tighten.



8. Insert crush tubes into holes previously drilled in front cross member.

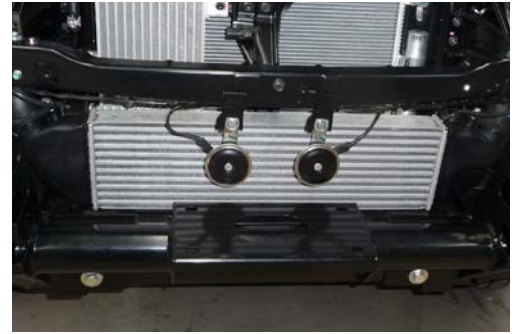
HINT: Use short bolts from fitting kit to temporarily hold crush tubes in position during installation.



9. Reinstall mounting cradle to vehicle, centralise, insert and tighten all mounting hardware.



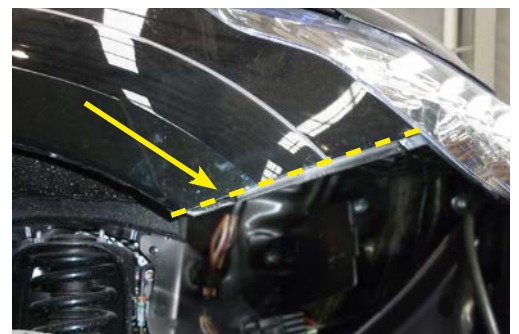
10. If fitting a winch, horns will need to be moved to the rear of the mounting cross member as shown.



11. Unclip grill from original bumper bar at points as shown. Refit grill to vehicle using bracket supplied.



12. If applicable, using the front edge of the mudguard as a guide, mark a straight line across flare and cut as shown



13. If winch is being installed, refer to winch installation instructions on page 8.

14. Unwrap bull bar. Check over riders and light assemblies are tight in bull bar before installation.

15. Fit bull bar to mounting cradle, align with vehicle leaving a 10-15mm gap between wings and mudguards and tighten all bolts.



16. Once bull bar is aligned with vehicle and bolts tightened, drill through pinning holes (circled in yellow) between bull bar and chassis bracket and secure with bolts, washers and nuts provided.



17. Mount washer bottle bracket into lefthand front corner of engine bay as shown.



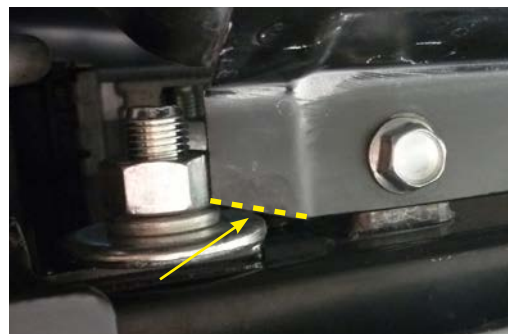
18. Unclip factory wiring loom for washer pump and pull through into engine bay. Cut factory plug off the loom and crimp spade terminals supplied onto the wires. Connect to supplied pump as shown.

Shorten factory hose and connect to washer pump.



19. Connect indicators, park lights and foglights per wiring diagrams on page 10.

20. Trim front corners of factory protection plate and refit to vehicle as shown.



21. Fit supplied protection plates to bull bar.

Heads of exposed bolts (as shown) may be spray painted black to conceal visibility.



22. Using wing protection plates as a guide, trim plastic guard liners and attach using cable ties.



# Winch Installation

1. Bolt fairlead to recess in front of bull bar using bolts, washers and nuts provided.



2. Fit bull bar to vehicle referring to steps of bull bar fitting instructions.

3. Mount control box in desired location.



4. Connect three colour coded cables to the corresponding poles on winch motor.





5. Connect the thin black earth wire and negative battery cable to the earth connection on the opposite side of winch motor.



6. Run the positive and negative battery cables into the engine bay taking care to secure cables away from any sharp or moving objects.

7. Connect positive and negative battery cables main battery of vehicle (Not Auxilliary Battery).

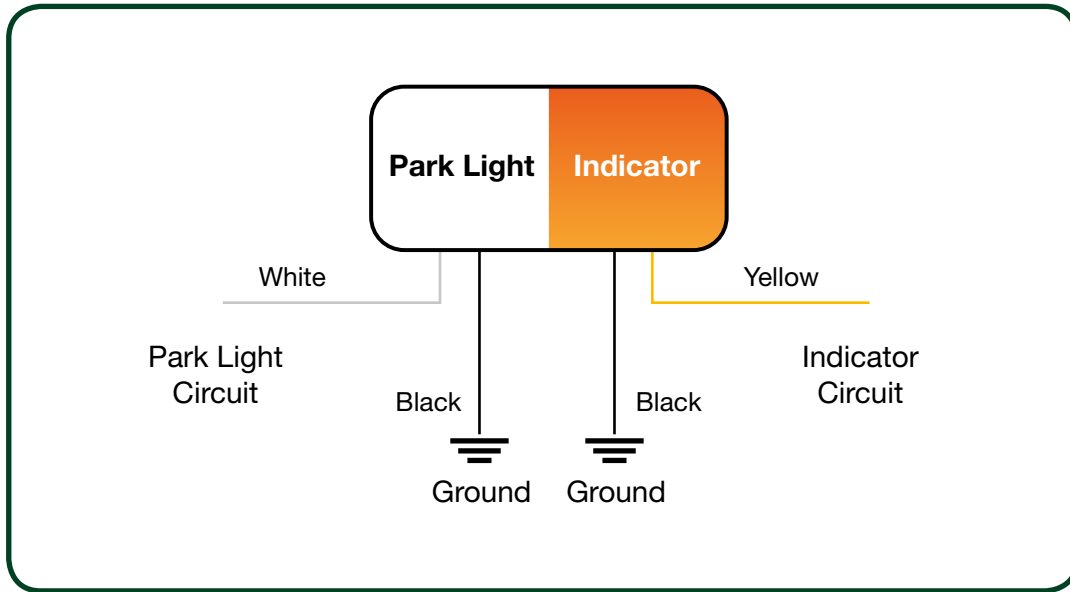
8. Attach breather hose to barb fitting on winch motor. Run hose to the highest available point in engine bay and cable tie in position. Cable tie hose away from any sharp, hot or moving objects.

Refer back to step 18 of the Bull Bar fitting instructions on page 5



# Wiring Diagrams

## PARK LIGHT & INDICATOR



## FOG LIGHTS

